

Kitchen Maker

Issue 49

Online

**MAXIMISING
MINIMALISM**



ISAAC LORD

FITTINGS, HARDWARE & TOOLS

How can we support you?



Get in touch to see how we can help you with:

- Updating showroom displays
- Personalised cover caps
- Assembly devices
- Accessories
- Blum price match

sales@isaaclord.co.uk



#BlumXIsaacLord

MINIMALISM IN THE KITCHEN - THE BARE FACTS

MAXIMISING MINIMALISM

PARING down your cooking space has nothing to do with skimping on style, or function.

In fact, cooking up a minimalist kitchen means different things to different people. For some, it is all about having plenty of concealed storage, so countertops are free of clutter.

Other people embrace minimalism as a decor aesthetic punctured by plain, flat-front cabinetry and luxurious stone waterfall islands.

Speaking in terms of practicality, it is all about creating a modest and uncluttered space with budget essentials. Even those obsessed with maximalist style have their own unique take on the simplified cooking space.

However, it is important not let other people's personal choices

confuse you. Here we attempt to sort through the broad range of styles that encapsulate the minimalist kitchen.

Minimalist kitchen with a modernist dining set

Clean lines and warm accents can be used to define a minimalist cooking space such as the one featured on Page 9 by Mosaic Design & Remodelling.

Gray quartz countertops and a rectilinear white tile backsplash add serenity. Cabinets and accents in dark walnut lend a hand-hewn feel to the kitchen.

Fixtures and furniture, such as the hand-blown smoke glass lighting and a tulip style dining set give the room some mid-century flare that feels both fresh and modern.

In some spaces, the trick for creating a neat and tidy kitchen is

This minimalist kitchen features Shaker-inspired cabinetry, while quartz worktops and stainless steel appliances create a sleek finish with a modern vibe.



VISIT US AT WWW.KITCHEN-MAKER.CO.UK - ONLINE MAGAZINE

This luxurious kitchen by interior design company, Britto Charette features stainless steel combined with high-end marble in the food preparation areas.



Maximising square footage for practical use is a key feature of the minimalist kitchen.



VISIT US AT WWW.KITCHEN-MAKER.CO.UK - ONLINE MAGAZINE

plenty of storage—here it takes the form of contemporary, flat-fronted cabinetry.

Kitchen With Room for Style and Function

Minimalist cooking spaces are all about making less feel like more, according to interior designer, Fiona Leonard.

Her version of the aesthetic is all about keeping surfaces free of extraneous stuff by giving kitchen tools and countertop appliances a specific place inside cabinets.

She also finds that having a white kitchen with a few simple pops of colour and natural textures creates the illusion of calm.

You can undoubtedly combine moody colours, natural textures and dramatic patterns into a pared-down kitchen.

Natural wood accents epitomise the minimalist vibe and the material takes the visual heft off the dark kitchen features.

High-end, minimalist kitchens for wine lovers

Another reason that so many people love minimalist kitchens is that the design aesthetic packs enduring style. The luxurious example by interior design firm, Britto Charette (seen on Pages 4 & 5) illustrates this point.

Stainless steel features combined with high-end marble add both beauty and function to the food preparation areas.

Along the back wall glossy black fronts conceal cabinetry and the refrigerator creating a seamless appearance.

A stunning wine fridge with teak shelving is a spectacular sight that would make any wine aficionado drool.

Stone tile floors can get pretty chilly in winter. Here, radiant heating solves the problem by keeping bare feet warm no matter the season.

Kitchen with room for style and function

Anna, the do-it-yourself blogger behind Anja Home, decided to ditch the upper cabinets in her small kitchen to make room for a tea nook.

The result (as illustrated on our front cover) is a minimalist cooking space that does not skimp on style, or customised function.

She says that her idea is a great way to create a clutter-free, simplified look, whilst still having room to display a collection of cute kitchen-related accessories.

One more tip worth sharing—in small spaces like this one, is it important to have a simple colour scheme to keep things feeling minimal. Anna stuck to a black and white palette with a few natural wood accents.

Minimal kitchens - the star of the show

The all-white kitchen with its matte, flat-fronted cabinets (as depicted on Page 7 bottom pic is a minimal masterpiece by interior design firm, Luca Lanzetta.

Cooking spaces like this one create a fresh canvas for cooking meals at home by keeping appliances and kitchen gadgets out of sight. Note the two rectangular-shaped cabinets on the kitchen island. They are handy dish drawers.

Minimalist kitchens with built-in dining table

Interior designer, Carrie Long fitted out this minimalist kitchen (as seen on Page 3). Featuring Shaker-inspired cabinetry, white quartz countertops and stainless steel appliances, it creates a sleek finish with a modern vibe.

Further elevating the space is the built-in dining table designed for both casual meals and formal dinners.

Minimalist kitchens that feel traditional

Two words sum up the spectacular cooking space (as depicted on Page 8 bottom pic by Amy Kartheiser: open and airy.

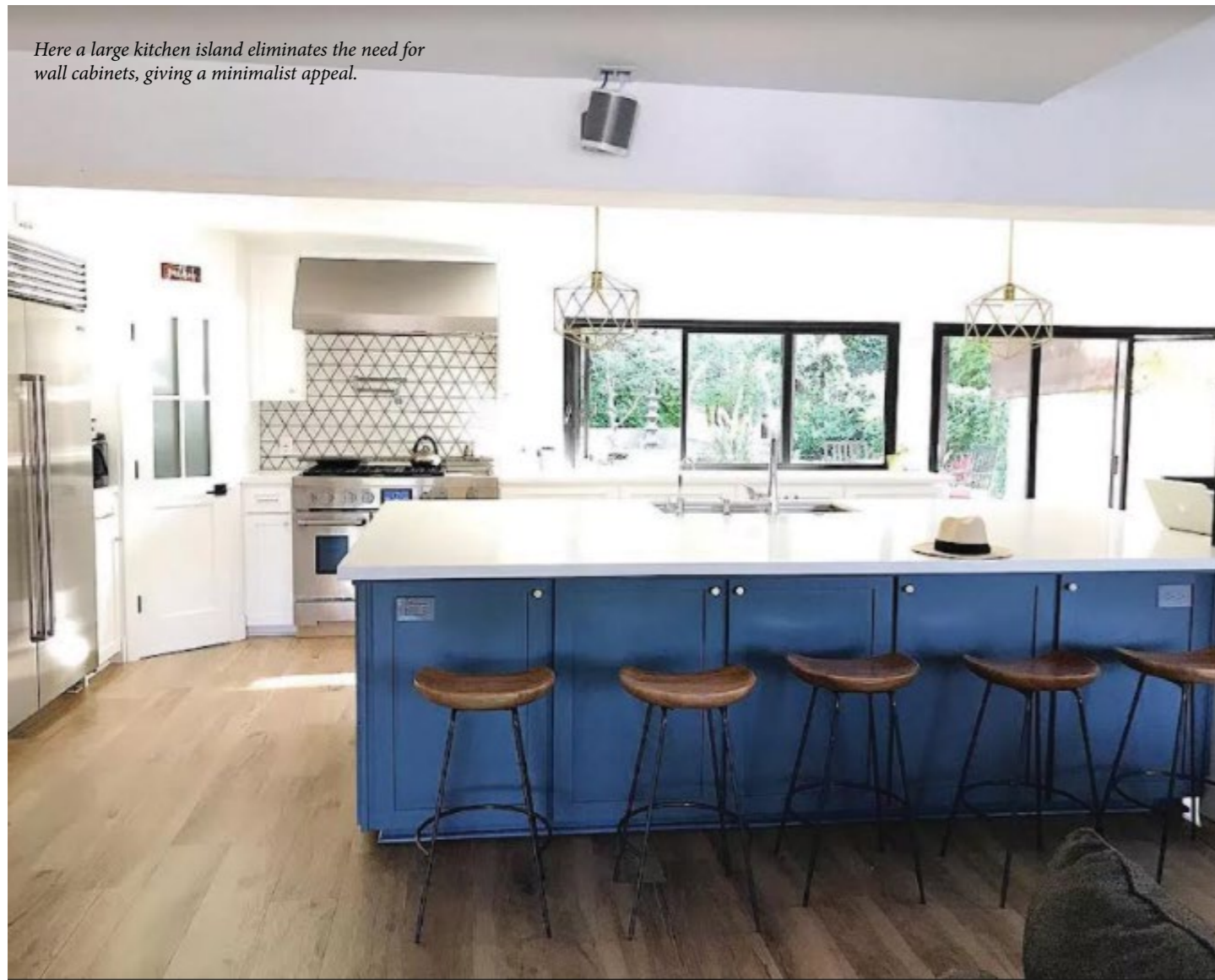
Whilst the all-white kitchen is rooted in minimalism, it also feels traditional, because of a few key features—most notably the high-end kitchen range and Carrera marble backsplash. Gold



This all-white kitchen with matte, flat-front cabinets is a minimalist masterpiece and is by interior firm, Luca Lanzetta.

VISIT US AT WWW.KITCHEN-MAKER.CO.UK - ONLINE MAGAZINE

Here a large kitchen island eliminates the need for wall cabinets, giving a minimalist appeal.



Whilst this all-white kitchen is rooted in minimalism, it also feels traditional, because of a few key features - most notably the high-end kitchen range.



VISIT US AT WWW.KITCHEN-MAKER.CO.UK - ONLINE MAGAZINE



Keeping things simple is the key to creating a minimalist look in the kitchen.

VISIT US AT WWW.KITCHEN-MAKER.CO.UK - ONLINE MAGAZINE

hardware and black pendant lighting punctuate the white space.

Stunning masculine kitchens

Dark, or moody colours totally work in minimalist spaces. Helen Green Design combined modern, wooden cabinetry with brown and black granite to create a warm and contemporary kitchen suitable for a bachelor. Pops of red lends a playful touch that feels 100 per cent grown-up.

Practical and pretty minimalist kitchens

The company which designed the neat and tidy kitchen as seen on our front page paid particular attention to creating clean, modern lines in keeping with the ideas of minimalism.

The goal was to maximise square footage for practical use - a key feature of minimalist kitchens.

The two counters in the foreground provide plenty of room for both food preparation and cleaning up.

The natural looking colour of the bar stools fits perfectly with the clean, modern lines of this kitchen.

Kitchens with room for style and function

A few years ago, Lauren Mochizuki, a decor blogger who pens Casa Mochi, designed her own kitchen.

A few of her smart ideas include a spacious pantry and a large kitchen island. Both eliminated the need for upper cabinets, giving her space minimalist appeal.

Experts say that the best kitchens are suited to the home-owner's taste. Lauren quenched her thirst for style with an eye-popping backsplash. The black grout she used turned the white triangle tiles into a graphic statement.

Thoroughly modern minimalist kitchens

When renovating the minimalist kitchen it is always a good idea to keep clean lines clearly in mind. In order to keep things visually pleasing, try combining a playful mix of visual textures and durable materials.

Kitchen walls can be lined with white subway tile with contrasting grey grout. A good choice for

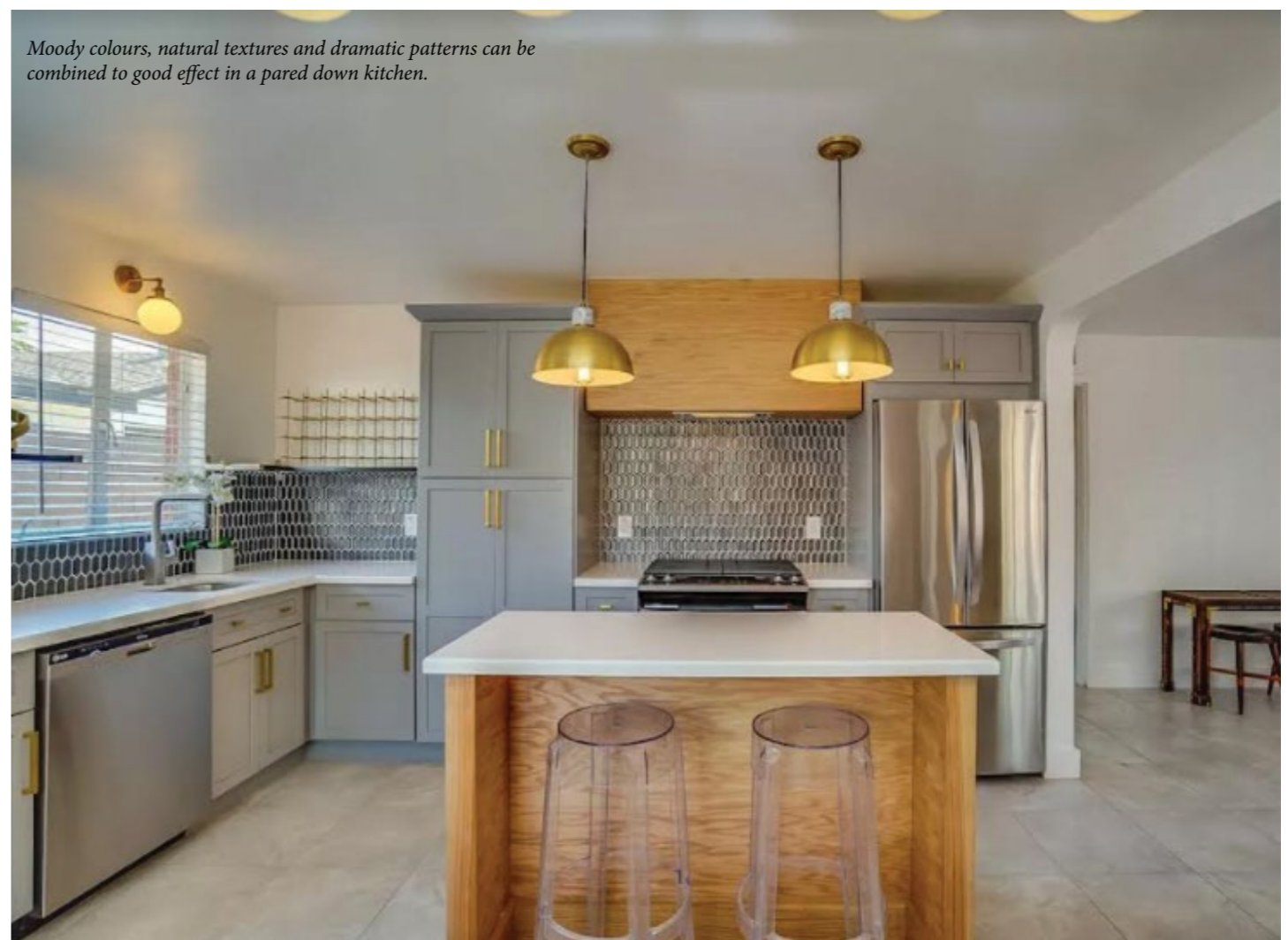
grounding a modern space is warm, wood flooring.

The result is a minimalist cooking space that does not skimp on style, or customised function and fits well with the minimalist approach to kitchen decor.

Minimalist kitchens can work well in any type of home and are not restricted to the modern environment. Besides, one huge advantage of the minimalist kitchen is that it is far less costly to purchase in the first place. Maximising minimalism really can work for everyone.



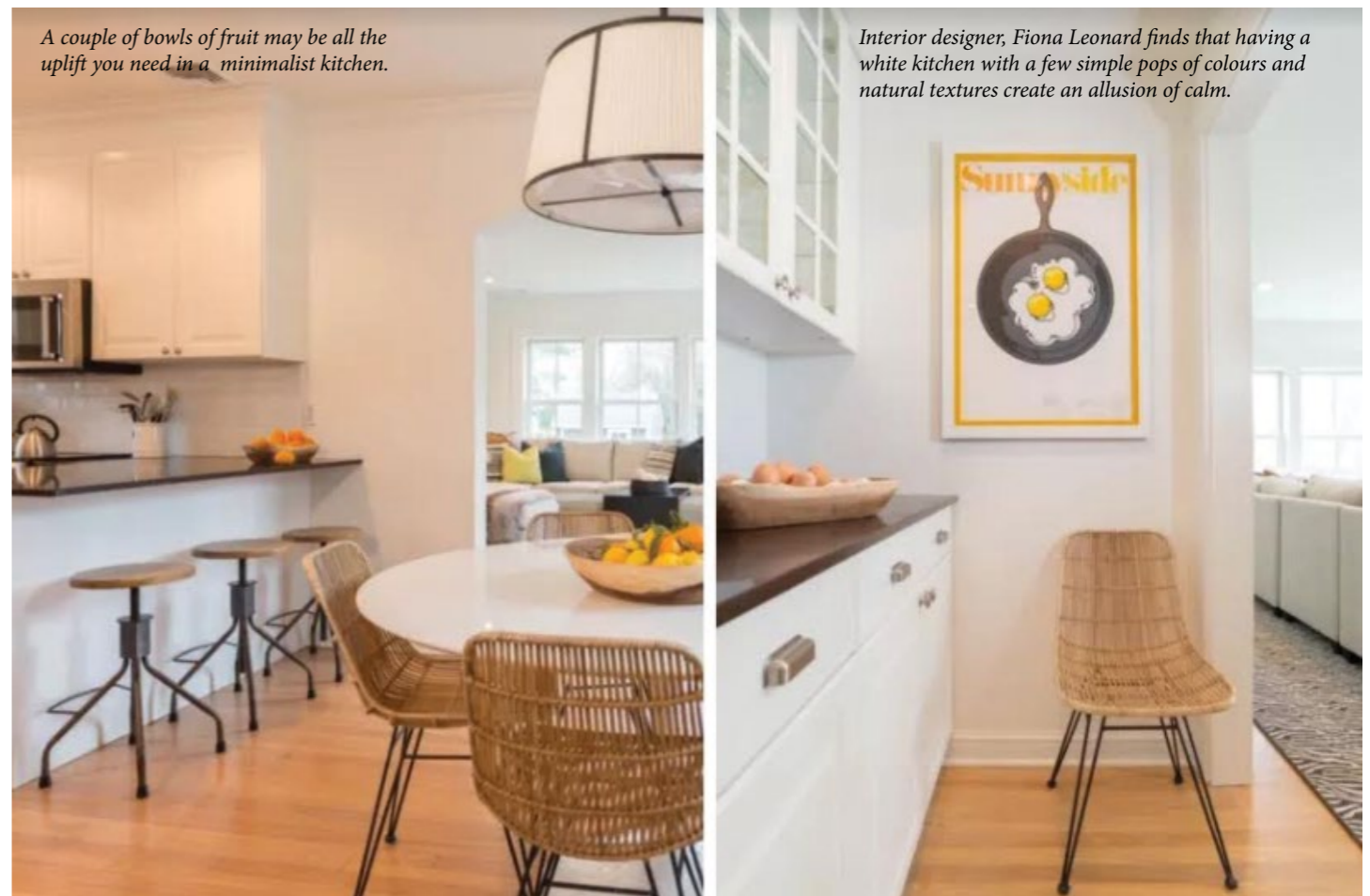
Use plain white tiles in a brickwork format as splash backs above plain black worktops in order to maximise simplicity in a small-sized kitchen.



Moody colours, natural textures and dramatic patterns can be combined to good effect in a pared down kitchen.



Dark, moody colours can work well in minimalist spaces and can be enlivened by pops of bright colours.



A couple of bowls of fruit may be all the uplift you need in a minimalist kitchen.

Interior designer, Fiona Leonard finds that having a white kitchen with a few simple pops of colours and natural textures create an allusion of calm.

OPEN LIVING SPACES - WHERE EVERYTHING FLOWS

“THE only thing that is constant is change.” This quote by Heraclitus seems to be just as relevant today as it was thousands of years ago. Whether we like change or fear it, we cannot avoid it. However, we can accept it and make the best of it.

Transformations are constantly taking place within our kitchens, as well as other rooms in the house. Room arrangements change, as do their uses and our lifestyle habits and flowing transitions are created.

The kitchen opens up to the living room and is used for cooking, eating, working, living, celebrating, learning and much more.

The international premium brand next125 is devoted to staying one step ahead, as the necessities of life evolve. Challenges become solutions and all the while the focus remains on the humans at the heart of it all.

next125 combines craftsmanship, technology, design and architecture at the highest level with the latest industrial manufacturing techniques.

Like a chameleon, the purist kitchen icon nx510 changes to wonderfully adapt to rooms and individual requirements. The L-shaped kitchen units with laminate SensiQ fronts in seashell white fine matt boldly blend into the room without appearing too dominant.

Beautifully elegant, the pastel tones convey an impression of space, giving the room a warm and homely feel but, at the same time, lifting the mood and revitalising.

However, it's not just the clear, consistent design of the kitchen concept that is appealing. It also has hidden treasures: doors, drawers and pull-outs conceal an abundance of intelligently devised storage space where everyday objects are always close at hand.

next125 can do kitchens. However, that's not all. Kitchens and

adjacent rooms are merging together more and more, so what could be more natural than extending decades of skill in the manufacturing of high-quality premium kitchens into the dining area with tables and benches.

Available in different sizes and made from solid walnut, or knotty oak, these pieces of furniture invite you to sit a while, put the world to rights and celebrate life. The possibilities are endless.

Schüller Möbelwerk KG, with headquarters in Herrieden, Franconia, was founded in 1966 and has developed over the past 50 years into a specialist for individually designed kitchens which are “Made in Germany”. At the company site, 2,209 employees produce more than 165,000 kitchens each year, which are sold in Germany and internationally.

With a turnover of 753.2 million euros, Schüller today ranks among the top players in the industry. An extraordinary depth of production, strong retail partnerships and corporate responsibility are all “typically Schüller”. Markus Schüller, Max Heller and Manfred Niederauer have run the second generation family business since 2003

next125 is Schüller's international premium brand. Attention to detail is synonymous with next125 kitchens. Inspired by the structures of the Bauhaus movement, next125 combines craftsmanship, technology, design and architecture at the highest level with the latest industrial manufacturing techniques.

The result is exceptionally elegant kitchens offering excellent value for money for quality and design-conscious customers in the mid and upper market segments. The next125 products have already been awarded a number of design prizes, such as the German Design Award and the Red Dot Award.

Want to find out more? Visit www.next125.com



TRANSFORMING YOUR KITCHEN



VISIT US AT WWW.KITCHEN-MAKER.CO.UK - ONLINE MAGAZINE



VISIT US AT WWW.KITCHEN-MAKER.CO.UK - ONLINE MAGAZINE

PYTHA 3D-CAD VERSION 25 PRODUCES FLEXIBILITY RESULTS IN THE KITCHEN

FROM concept to completion, Pytha 3D CAD is one of the leading 3D CAD systems for the high-end kitchen sector.

With its powerful Version 25, German software developer, Pytha Lab sets high standards in the world of CAD.

A particular highlight in V25 is the new, seamlessly integrated render engine, that allows high-end rendering directly in the Pytha modeller.

Within seconds, users can now see a photo-realistic image without having to switch programs first. Afterwards, it is easy to continue working within the scene that has been created.

Pytha thus enables every user to achieve almost perfect results with very little effort. No expert is needed for this – lighting a scene is really easy and straightforward.

Intelligent brightness settings create stunning image calculations, whether day, or night. Meanwhile an HDR-

panorama image generates a natural and atmospheric light.

Luminaires are easily and precisely matched to light values in lumens (brightness) and Kelvin (colour temperature). Frequently used lamp settings can, of course, be stored in a separate library and retrieved at any time.

The render engine now also features real indirect light, which gives the user a realistic colour impression. Improved materials give the scene a real vibrancy.

Pytha developers have also improved the speed of the calculation of a scene. An intelligent noise filter called “denoising” generates a finished image in the highest quality within seconds. This allows any user to render projects in photo-realistic quality and create convincing presentations.

Want to find out more? visit www.pytha.com



VISIT US AT WWW.KITCHEN-MAKER.CO.UK - ONLINE MAGAZINE



VISIT US AT WWW.KITCHEN-MAKER.CO.UK - ONLINE MAGAZINE

CABERWOOD MDF PRO THE IDEAL PANEL FOR BEAUTIFUL HAND-MADE KITCHENS

WHEN John Penny of JP Joinery, based in Kirkliston – a small town near Edinburgh, was asked by a client to design, build and install a “wow” bespoke kitchen, the one product element he knew he would be utilising was West Fraser’s CaberWood MDF.

‘This was my first full, bespoke kitchen project and it presented me with some challenges,’ says John.

John sourced West Fraser’s CaberWood MDF Pro MR from MGM Timber branches in Edinburgh and prepared the door and drawer fronts in his workshop.

‘I have tried a few brands of MDF, but have found CaberWood MDF Pro MR to be the best choice for a perfect finish. I sprayed the MDF with a water-based paint, which contains a full chemical hardener.

‘This counters any fibre-raising which happens, to varying degrees, with all MDF. However, when experimenting with different brands, I have always found the West Fraser board to be the best,’ he proclaims.

CaberWood MDF Pro MR is moisture resistant, making it particularly suitable for use in kitchen construction.

‘I used a mix of 9mm, 18mm and 22mm thick MDF for the variety of units – almost 40 in total – and, as always, found the boards easy to work with.

‘The quality is always consistent, which is important, especially on such a large project. It doesn’t splinter, or chip, with the result that there’s very little waste.

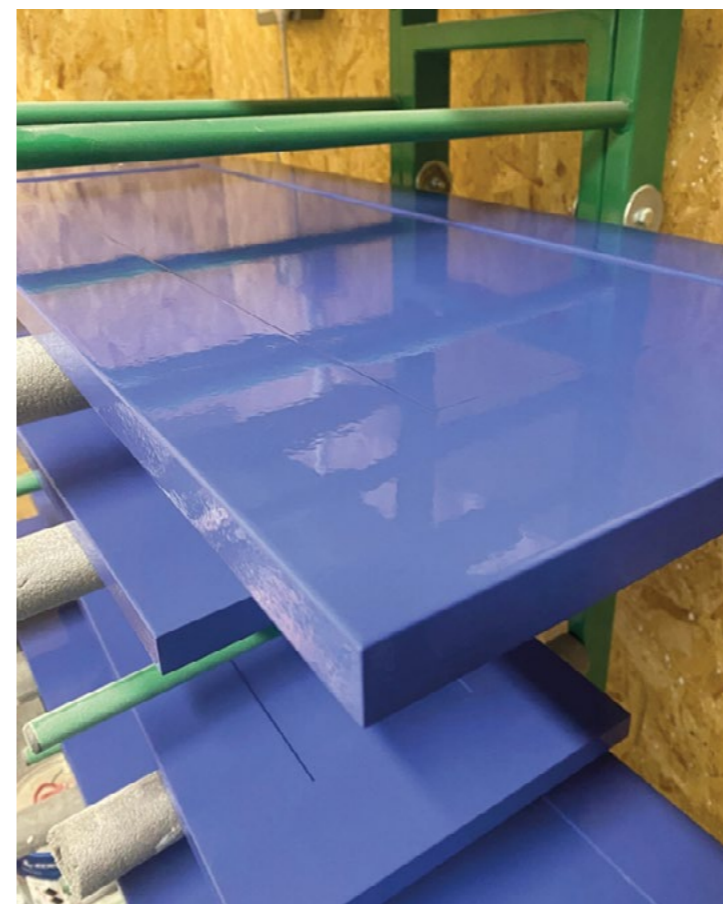
Compared with other brands I’ve used, CaberWood is really well priced,’ says John.

Needless to say, the client was delighted with the end result and John will be using CaberWood MDF on all his future kitchen projects.

Want to find out more? visit www.westfraser.com



PANELS FOR KITCHENS



VISIT US AT WWW.KITCHEN-MAKER.CO.UK - ONLINE MAGAZINE

VISIT US AT WWW.KITCHEN-MAKER.CO.UK - ONLINE MAGAZINE

RE-BRANDING OF RENOLIT 3D THERMO-LAMINATES

AS A company, Renolit is renowned for its stock range of thermo-laminates, which are constantly being updated and extended to include all the latest on trend-looks and fashions.

New introductions are made at least twice a year, making customers fully aware of all the most sought-after designs and colour options, which are being launched throughout the different seasons of the year. You can always rely on Renolit to provide inspiration especially for those involved in kitchen design.

Renolit's design experts have collected a host of new and exciting wood décors for your next interior design project.

Be inspired by the new Harbor Oak with its subtle weather cracks and pores, available in three shades: Gold, Vintage and Espresso, or add for a new twist on a popular design, take a look at Halifax Oak Gold Brown Synchro.

Alternatively, Vicenza Oak is an elegant linear version of a rift cut oak offering an alternative to existing classic oaks. While finely structured pores and strong contrasting details characterise the image of the lively wild beech Crenata Natural.

Solid colours

Colour denotes an ambiance, creating a room's atmosphere. Smoothing the way to exciting design with its superior robust smooth surface incorporating PST (Physical Surface Technology) two new Premier Matt colours for 2021 are Indigo Blue and Onyx Grey.

Indigo Blue is an almost black midnight blue. Its deep, rich hues create drama and a striking statement.

Onyx Grey is a well-balanced sophisticated shade of grey that resembles the colour of dark concrete that modern styling, whilst creating a calming serenity within a room.

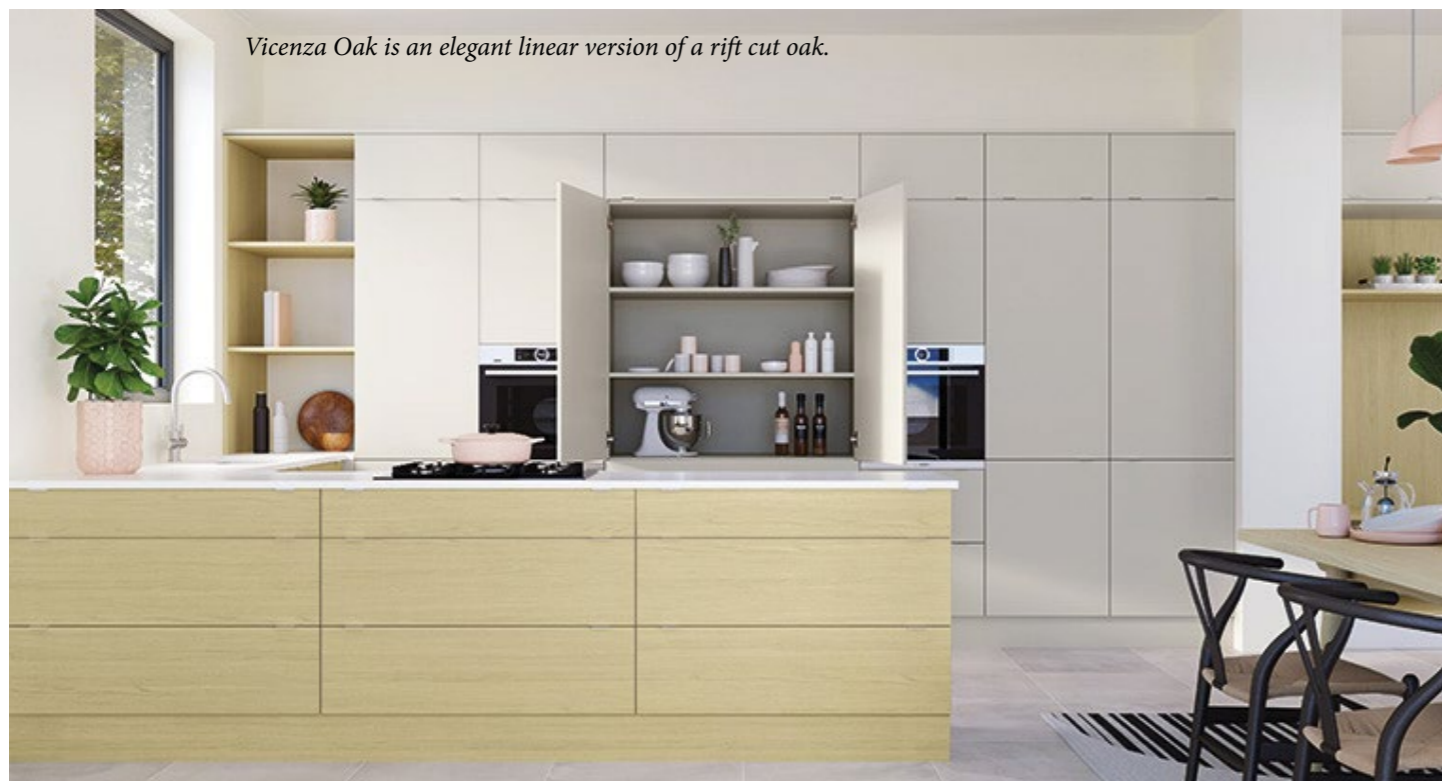
Stone

Stone can be many things – smooth or rough, simple, or complex. Stone is a material which is so versatile that it is a staple in interior design.

From the deep Garnet Slate Dark Grey to the light and textured Harley Elegant Oxide, the Renolit design experts have created a variety of beautiful and functional stone décors.

Just as the stone designs are endless, so too is their potential for combinations with a variety of colours – pairing them with strong red tones is especially appealing.

Want to find out more?
Visit www.renolit.com&interiorsurfaces



VISIT US AT WWW.KITCHEN-MAKER.CO.UK - ONLINE MAGAZINE



THERMO LAMINATES



VISIT US AT WWW.KITCHEN-MAKER.CO.UK - ONLINE MAGAZINE

IMPROVING QUALITY & PRODUCTIVITY WITH CABINET HARDWARE DESIGNED FOR USE IN THE MODERN DAY KITCHEN

TITIUS' furniture hardware solutions have been improving homes around the world for decades. They increase the quality and facilitate the assembly of furniture, giving a significant competitive advantage to manufacturers and improving the consumer experience.

The company's most popular components are the T-type concealed hinge that has a tool-free three-way snap-on mounting and the TeraBlack range that offers an attractive black matte hardware finish to enhance the appeal of kitchen cabinets.

Titus offers a comprehensive range of hinges for every type of door. The latest innovation, the T-type, enables time-savings at the point of kitchen cabinet assembly and assures a life-long, consistent performance on a wide range of doors.

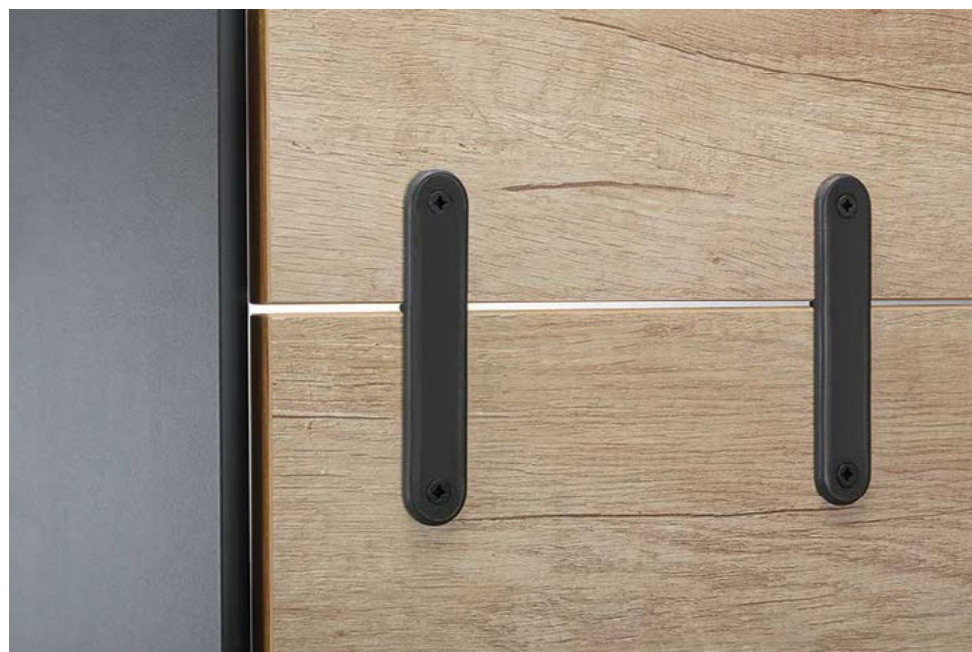
The T-type hinges with integrated soft closing assure above-average consistency of performance with no bounce effect and reliable closing at all closing speeds. A unique solution that works on doors of different dimensions and weights, with no rebound.

The three-way snap-on mounting system makes them exceptionally easy to install, with an intuitive hinge-to-plate mounting in three directions (from the front, the back and the top). Mounting cabinet doors - even on large heavy doors with multiple hinges - has never been this easy.

The range has recently been extended to include pie-cut (bi-fold) hinges for corner cabinets, which fit standard drilling patterns and feature convenient "double lock" opening.

This means that users can either open just one door leaf in order to gain excellent access into the kitchen cabinet interior, or they can fully open the doors by locking the hinge cup and make the door leaves work as one.

T-type is a high-performance hinge that allows for misalignments of drilling patterns up to 0.6mm. Even in the case of misalignment drillings, the hinge performs at its peak capability and always



ensures smooth and perfect closing in every cycle.

T-type with ConfidentClose, creates the consumer preferred way of damping based on the results of Titus research made in UK, Germany and Slovenia. It is characterised by fast closing, late start of deceleration action and quiet landing with SoftTouch.

The damper is placed in the hinge cup with its positioning transversal to the hinge cup, and can be easily adjusted to suit different types of doors.

TeraBlack is much more than a colour option

With a close eye on emerging trends in the international kitchen furniture market, Titus has developed TeraBlack versions of many of its most popular products, including its hugely successful T-type hinges, TL5 “full metal jacket” dowels, shelf supports and its push latches.

The new Tera (Titus Enhanced Resistance Application) versions feature an exceptionally attractive non-reflective black finish, which is not only visually appealing, but also highly resistant to corrosion, uniform and consistent. The T-type TeraBlack hinge has a smooth, uniform surface with a velvet feel, which absorbs light and reduces reflection.

Particularly well suited to applications in high-end premium kitchen furniture, Titus TeraBlack products fully meet

the requirements of designers and consumers looking for unobtrusive, yet attractive cabinet hardware. They have highly uniform surfaces and a velvet feel that complements their quality and enhances consumer appeal.

‘At Titus, we put a great deal of effort into monitoring developments in the kitchen furniture sector and recently we’ve seen a growing demand for matt black cabinet hardware,’ says general manager at Titus UK, Phil Beddoe

‘We weren’t satisfied, however, with the idea of responding by simply offering another colour option – we wanted to offer a market leading solution that combined a visually appealing dark matt finish with genuine and valuable product benefits.

‘Drawing on our unique expertise in cabinet hardware development and manufacture, that’s exactly what we’ve done with the new TeraBlack versions of our products,’ adds Mr Beddoe.

The new TeraBlack products are Titus engineered solutions supported by tightly controlled, repeatable and efficient processes that provide a high level of corrosion resistance and consistency throughout the lifecycle of the product.

Want to find out more? Visit www.titusplus.com



VISIT US AT WWW.KITCHEN-MAKER.CO.UK - ONLINE MAGAZINE

MATRIX BOX: THE DRAWER RANGE FOR GREATER APPLICATION EFFICIENCY

THE lockdown triggered a seismic movement for the home improvement market. Buoyed by a nation who were forced to stay at home, but whom quickly began to dream up more inspirational features for their properties, furniture manufacturers have been busy helping swathes of customers design highly functional, good-looking spaces.

However, increased demand for their services has meant that manufacturers have needed to find processes, fittings and services that help them turnaround projects more quickly and efficiently.

Thankfully, companies such as Häfele have responded accordingly, launching products designed with speed and ease firmly in mind.

Häfele’s new suite of drawers, Matrix Box, is one such example. The Matrix Box range is a universal drawer system suitable for any application in a home.

The range is available in three product lines – Matrix Box S, Matrix Box A and Matrix Box P – with each product suitable for use in the kitchen.

Available in a variety of widths, depths and heights, the Matrix Box range caters well to a wide range of applications. Within the range there are suitable drawers for bathroom vanity units, which tend to be shallower and shorter in depth, plus under-sink options which are ideal for when customers want an integrated basin option.

With load capacities ranging from 30kg to 50kg, Matrix Box is also brilliantly designed for heavy duty drawer systems, such as internal kitchen drawer stacks, with either rectangular, or round rails, able to hold over 30 food tins at any given time. The Matrix Box range also works well for deeper pan drawers.

Offering full extension as standard and push-to-open options, Matrix Box is suited to any domestic, or commercial application where quick and easy access to tools and equipment is key,

such as an office space, or in a medical setting, while its smooth-running minimises sound.

A wide variety of colour options is also available – Matrix Box P is available in white, grey, silver, anthracite and bronze, whilst Matrix Box S and Matrix Box A are available in white, grey and anthracite – there’s a drawer available to suit any theme or décor, with the result that the range can be seamlessly integrated into any home.

The entire Matrix Box range has been crafted to aid ease of installation. The Matrix P drilling jig significantly speeds up drawer runner fitting; once lined up against the carcass fascia at the right height for the chosen runner, furniture producers can pre-drill holes using a countersink drill bit.

Likewise, a fascia alignment jig helps locate the fascia fitting into the back of the drawer front. The jig has a ratchet function, allowing users to tap the drawer front top for easy and quick adjustment.

When the installer is happy with the alignment, simply tap the drawer again front-on to make drill hole impressions.

Products such as Matrix Box are in themselves a time saving tool, but Häfele has teamed them with a variety of value services to reduce leg work and make life even easier for manufacturers.

Through ranges like Matrix Box and the complementary services available from Häfele, furniture manufacturers are empowered threefold: they’re able to use fittings which help complete their projects more effectively and efficiently, meet the customer’s needs in terms of style and functionality and provide a high-quality finish as you would expect from Häfele products.

Want to find out more? Visit www.hafele.co.uk



VISIT US AT WWW.KITCHEN-MAKER.CO.UK - ONLINE MAGAZINE

The Woodwork Dust Control Co Ltd

Leaders in Dust Control Technology

A Complete Wood Waste Extraction Service to all Timber Industries

- ★ Design, Manufacture, Installation
- ★ Large hopper filters, fans, cyclones
- ★ Small bag filters, rigid ductwork, flexible hose
- ★ LEV COSHH testing, assessment, service
- ★ EWI-THERM Wood burning stoves
- ★ Fast nationwide service



Contact us for our FREE product catalogue:

Tel: 01844 238833 Fax: 01844 238899

Email: enquiries@woodworkdustcontrol.co.uk

Web: www.woodworkdustcontrol.co.uk

